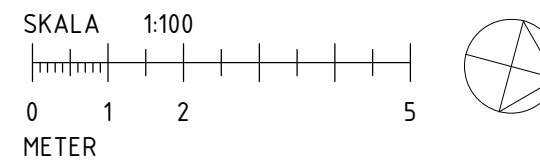
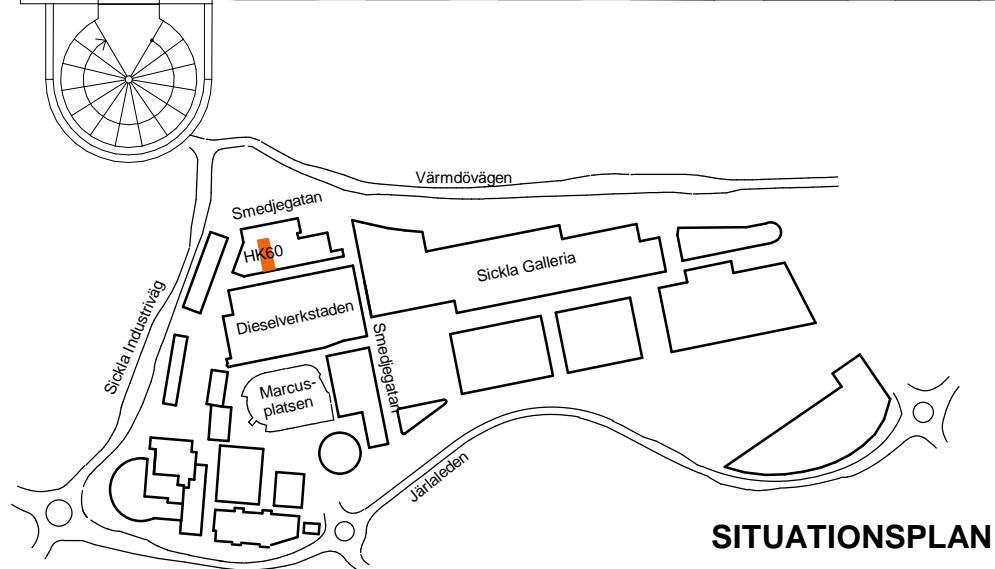
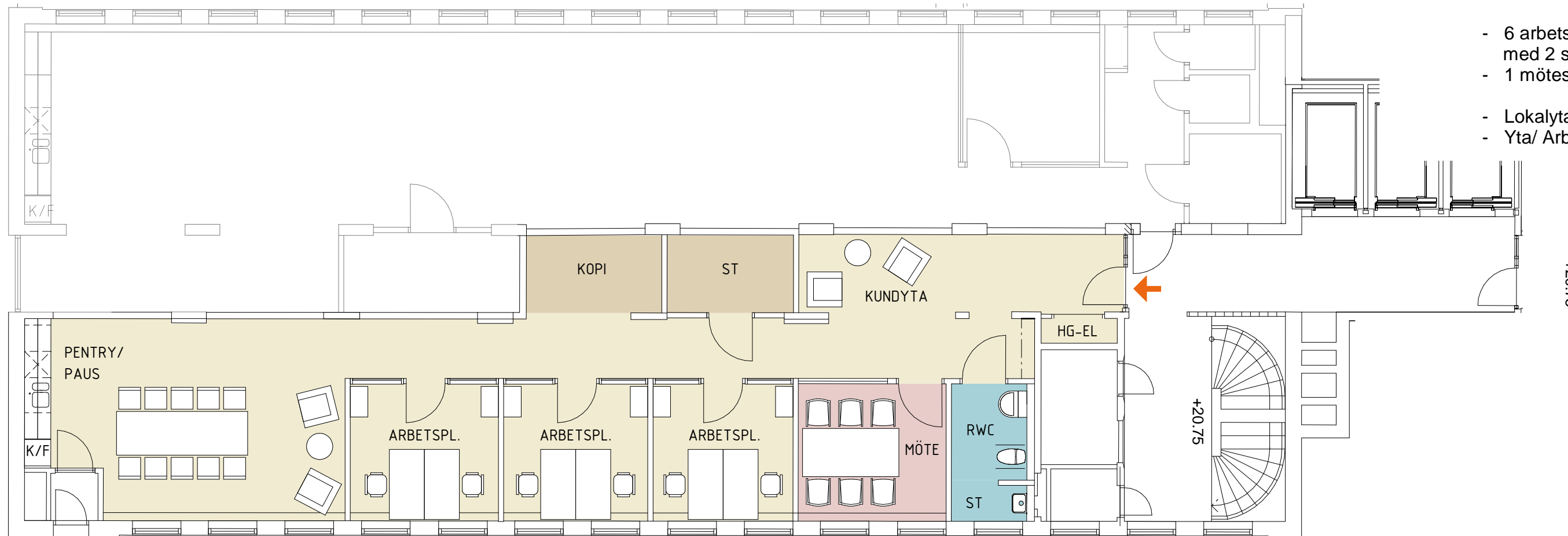
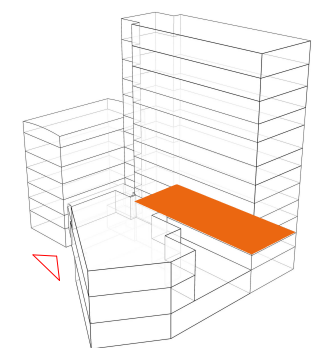


TOTALT

- 6 arbetsplatser, 3 st kontor med 2 st platser per rum.
- 1 mötesrum/ 6 platser
- Lokalyta (LOA): 132 m²
- Yta/ Arbetsplats: 13 m²



Skala 1:100 A3
HG skiss / IFM
2019-10-10



- Plan 12 +50,46
- Plan 11 +46,86
- Plan 10 +43,26
- Plan 09 +39,64
- Plan 08 +36,49
- Plan 07 +33,33
- Plan 06 +30,19
- Plan 05 +27,04
- Plan 04 +23,89
- Plan 03 +20,75
- Plan 02 +17,59
- Plan 01 +13,38