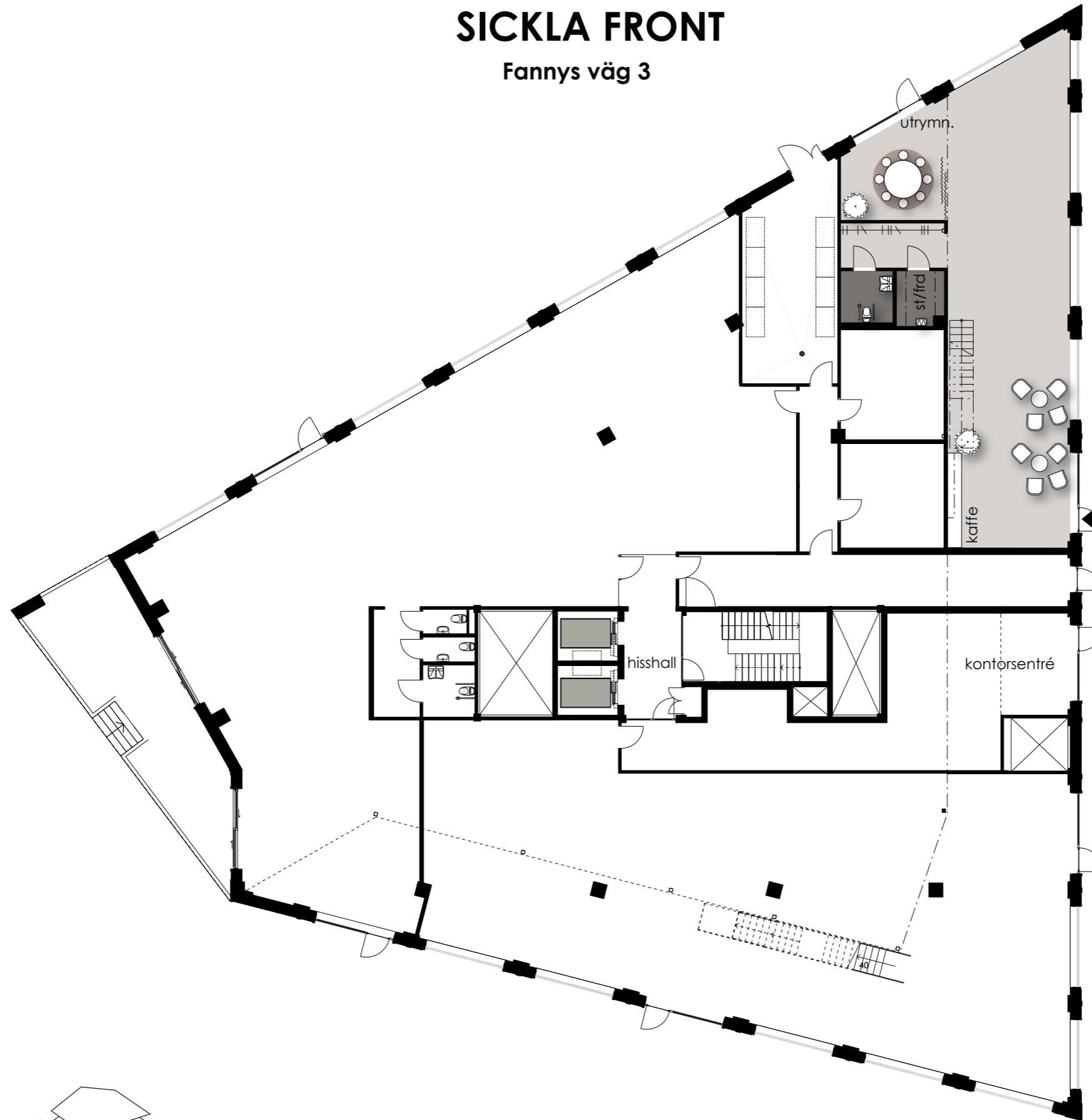


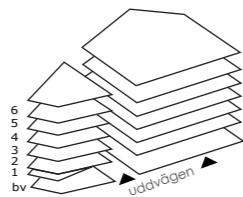
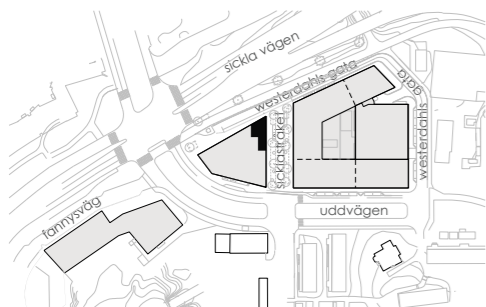
# SICKLA FRONT

Fannys väg 3



## HUS 510 ENTRÉPLAN ca 146 kvm

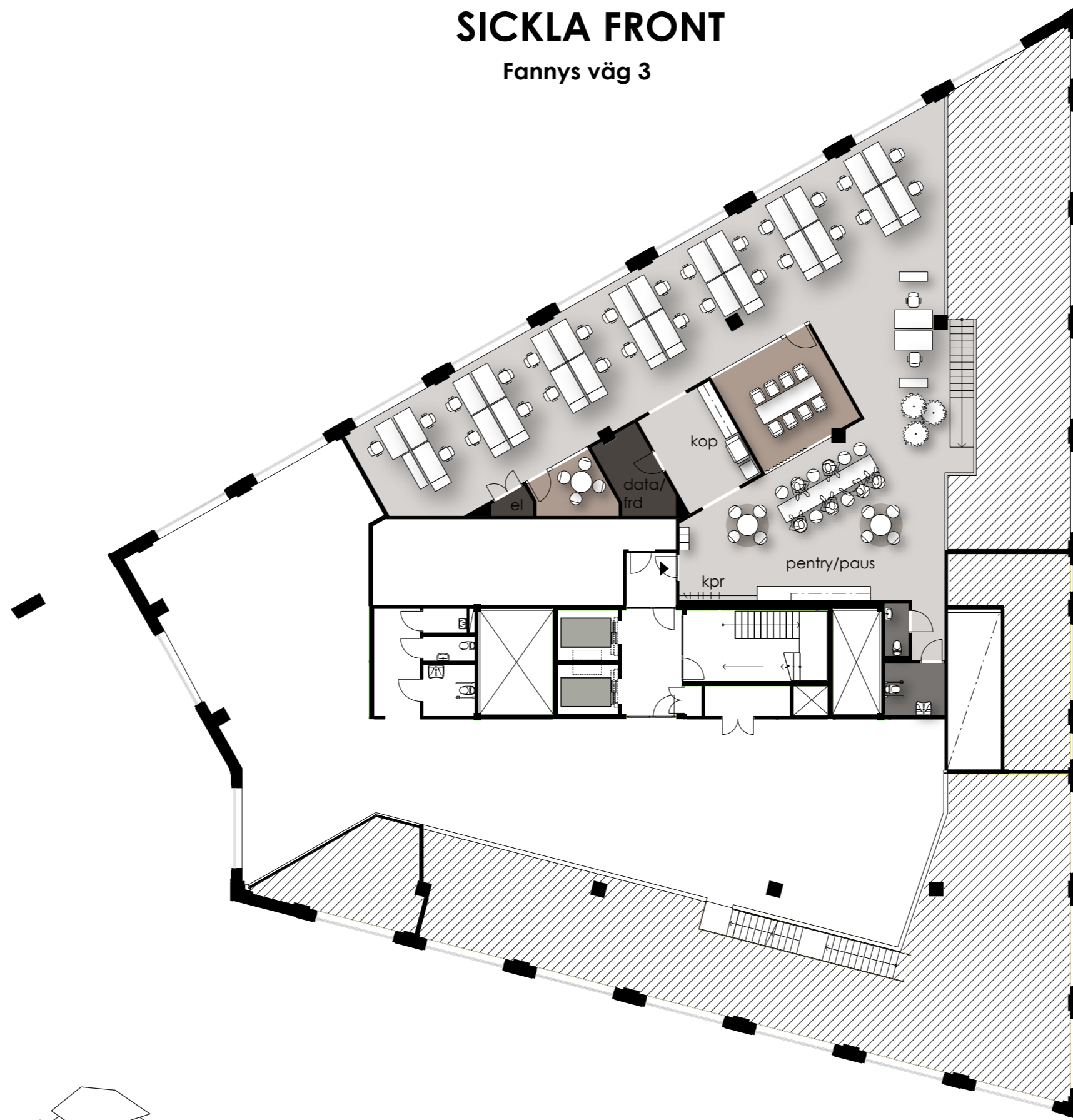
2020-03-02  
ENTRÉ OCH SHOWROOM/BUTIK



- ENTRÉPIL
- MÖTESRUM
- FÖRRÅD/TEKNIK
- VÅTRUM
- HISS

# SICKLA FRONT

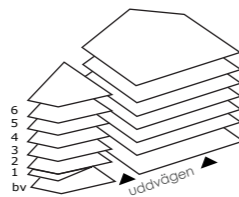
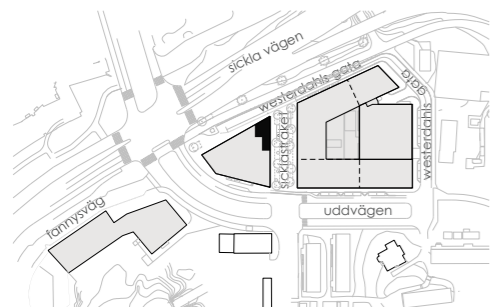
Fannys väg 3



**HUS 510 ENTRESOL**  
**ca 330 kvm**

2020-03-02  
ARBETSPLATSER:  
29 FAST ARBETSPLATS  
(1600x800 mm ARBETSBORD)

11 KVM/PERSON



- |   |  |
|---|--|
|  ENTRÉPIL      |  MÖTESRUM |
|  TOUCHDOWN     |  VÅTRUM   |
|  FÖRRÅD/TEKNIK |  HISS     |