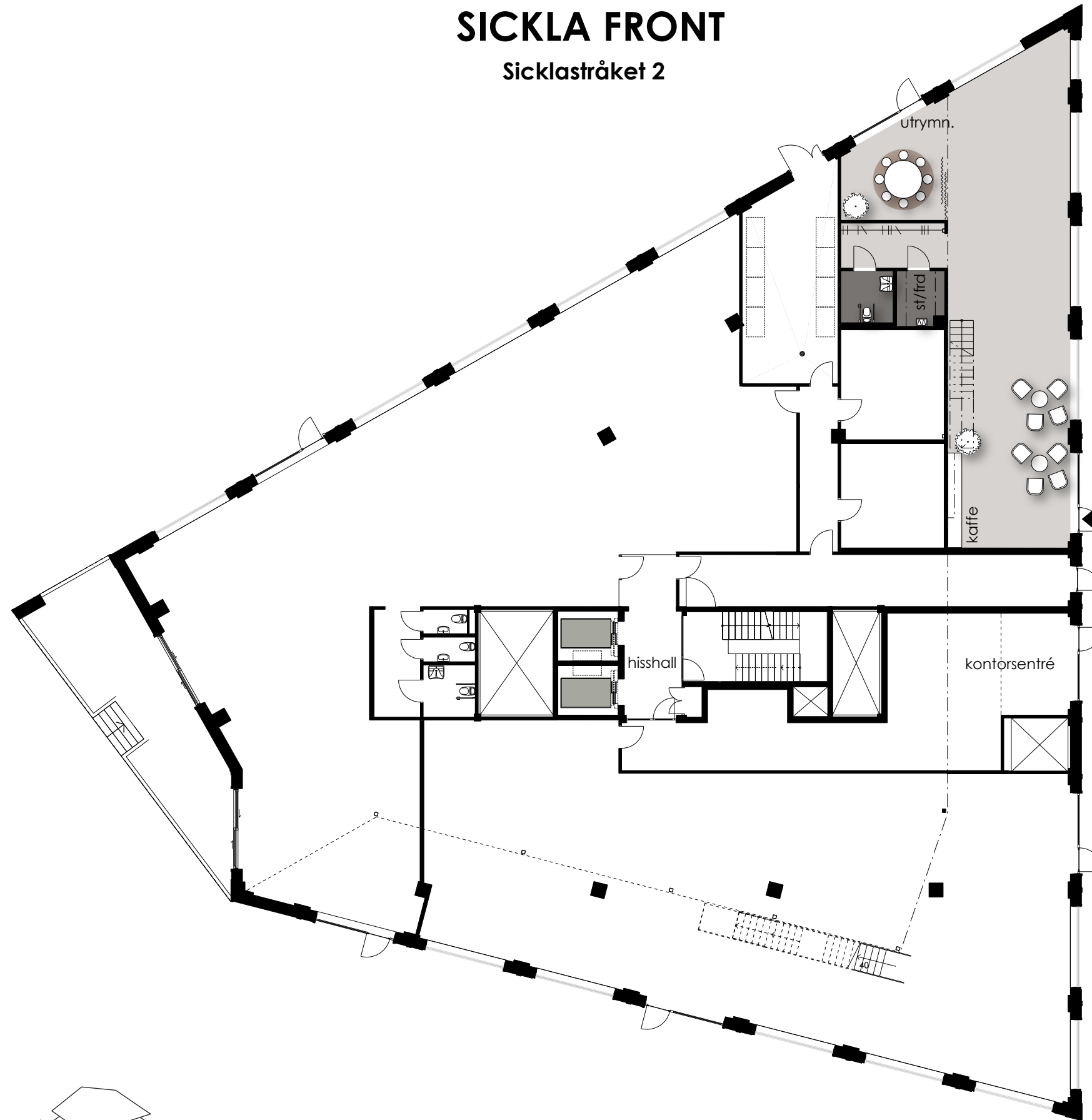


SICKLA FRONT

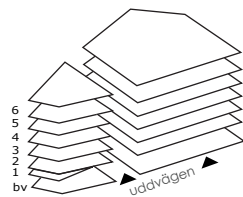
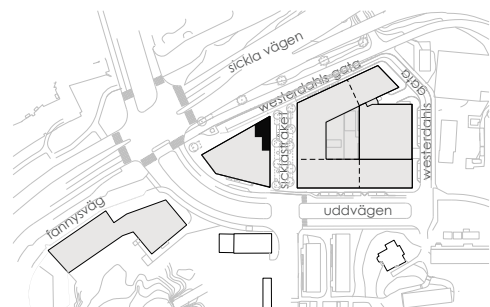
Sicklastråket 2



HUS 510 ENTRÉPLAN

ca 146 kvm

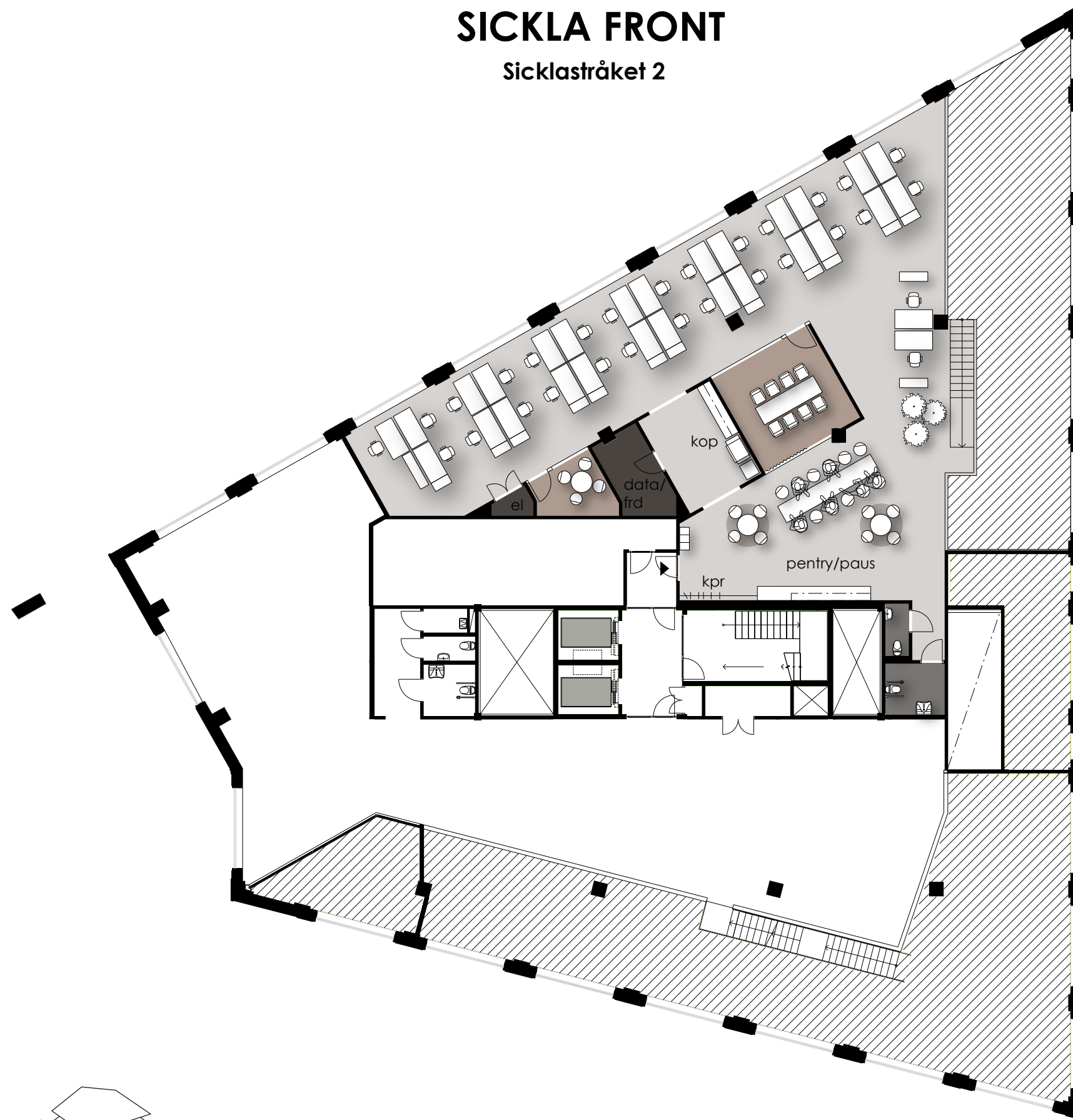
2020-03-02
ENTRÉ OCH SHOWROOM/BUTIK



- ▶ ENTRÉPIL
- MÖTESRUM
- FÖRRÅD/TEKNIK
- VÅTRUM
- HISS

SICKLA FRONT

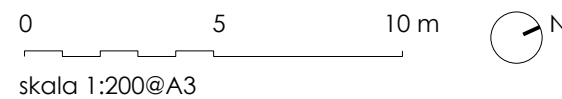
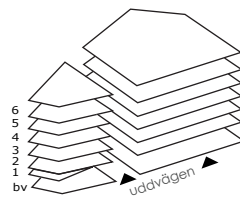
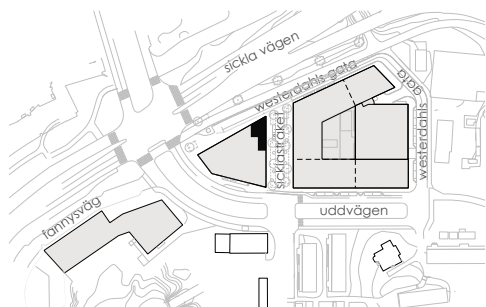
Sicklastråket 2



HUS 510 ENTRESOL
ca 330 kvm

2020-03-02
ARBETSPLATSER:
29 FAST ARBETSPLATS
(1600x800 mm ARBETSBORD)

11 KVM/PERSON



- | | |
|---|--|
|  ENTRÉPIL |  MÖTESRUM |
|  TOUCHDOWN |  VÅTRUM |
|  FÖRRÅD/TEKNIK |  HISS |