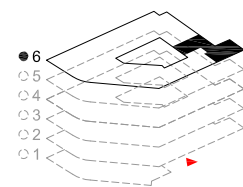
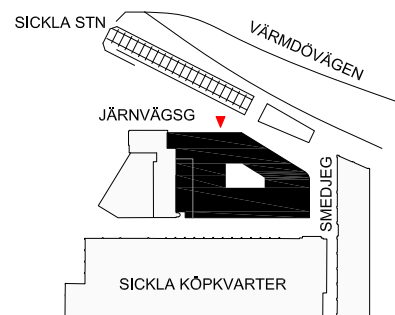


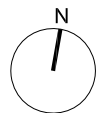


CURANTEN

PLAN 6, Lokal 605 390 m²



- ▶ ENTRÉPIL
- MOTTAGNING/BEHANDLING
- PERSONAL/OMKLÄDNING
- STERIL, SKÖLJ, STERILFRD
- ADMINISTRATION, RECEPTION
- WC/FÖRRÅD, STÄD
- HISS/TRAPPA



0 5 10 15 m
SKALA 1:150