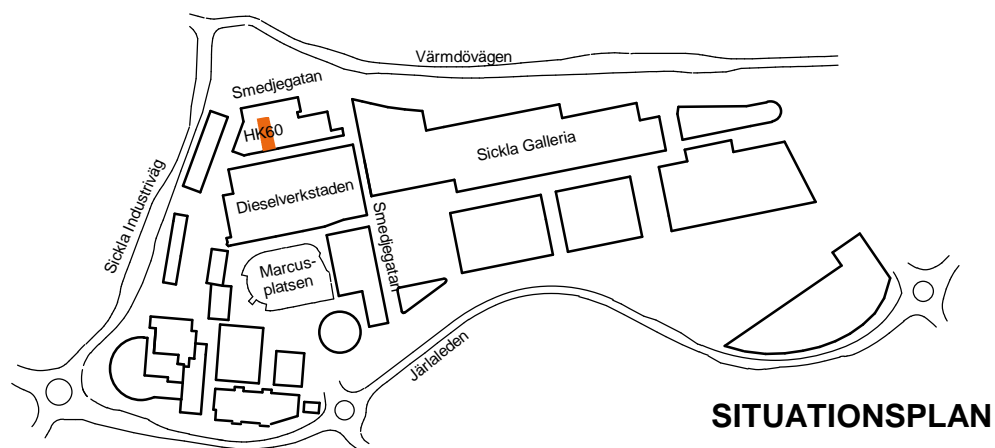
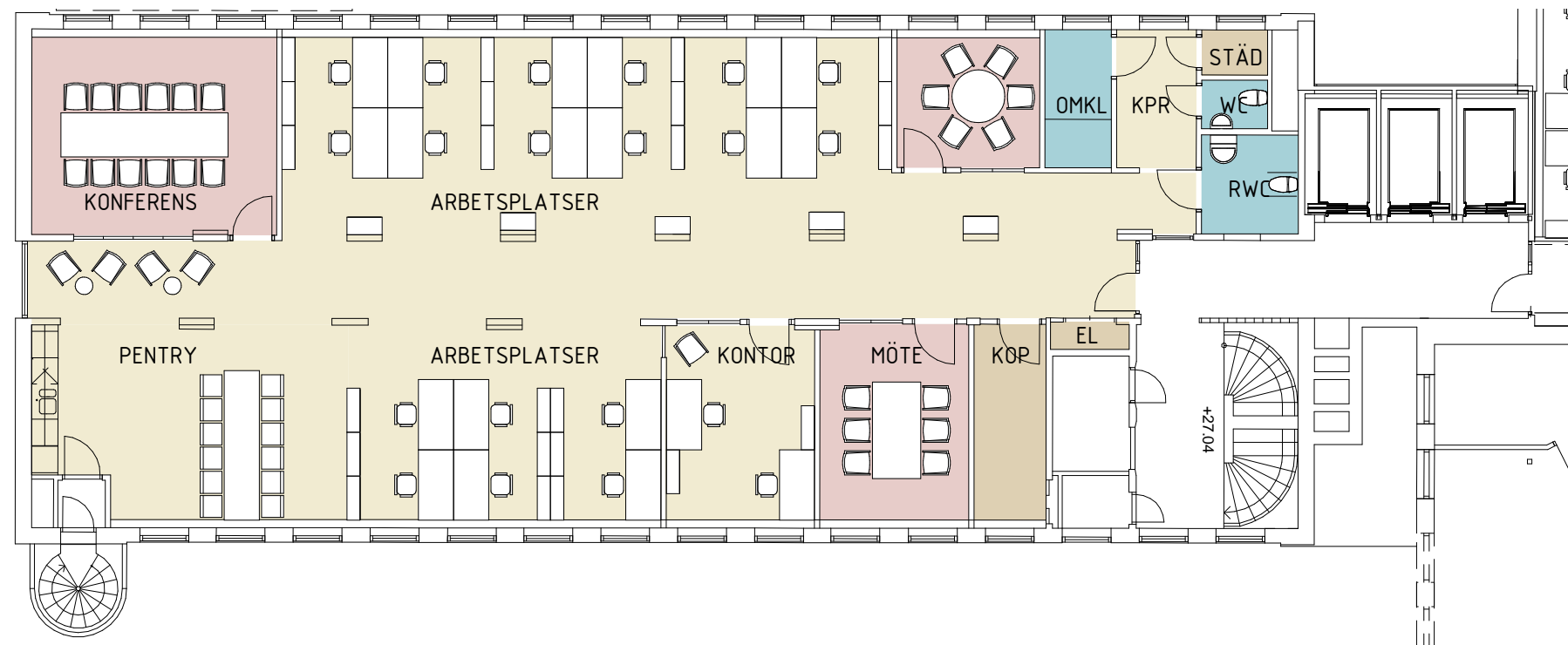


SICKLA, HK60 HUS 502A, PLAN 5

LOA 290 kvm

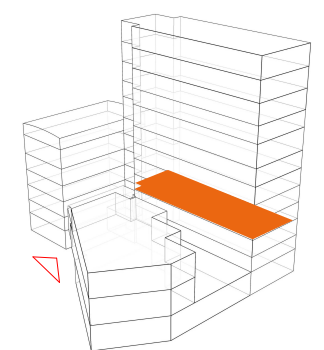
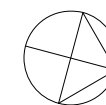
- 2 arbetsplats i kontorsrum
- 18 arbetsplatser i öppet landskap
- 2 mötesrum/ 6 platser
- 1 konferensrum/ 12 platser
- Yta/ Arbetsplats: ca 14,5 m²



SKALA 1:150



2021 06 04



Plan 12	+50,46
Plan 11	+46,86
Plan 10	+43,26
Plan 09	+39,64
Plan 08	+36,49
Plan 07	+33,33
Plan 06	+30,19
Plan 05	+27,04
Plan 04	+23,89
Plan 03	+20,75
Plan 02	+17,59
Plan 01	+13,38